



Professional Development Course Information

Our ever-growing course catalog features online courses that are informative, thought-provoking, and inspiring. Teachers' Domain Professional Development courses broaden educators' knowledge of science content and inquiry methodology, and help them integrate technology into the classroom. These online courses give teachers new perspectives and resources to motivate students about science and facilitate their learning.

Each research-based course builds upon what participants already know and enables them to take an active role in their learning. In addition to readings, assignments, online discussions (about the topics and teaching and learning strategies), and videos of actual classroom practice, all courses include multimedia resources – video clips and interactive activities – from public broadcasting sources such as *NOVA*, *ZOOM*, and *A Science Odyssey*. These multimedia resources are also available in the Teachers' Domain collections, an online library, for teachers to use with their students.

All course content corresponds to the National Science Education Standards and the McREL Compendium of K–12 Standards. The courses are online and asynchronous, allowing teachers to take them at their own convenience. Teachers' Domain courses may be licensed by educational organizations to deliver to the teachers they serve.

Courses are available in two formats to best meet specific science learning needs.

2-Session Courses – 15 contact hours, approximately 2–3 weeks

Full Survey Courses – 45 contact hours, approximately 12–16 weeks

2-Session Courses

(15 contact hours)

These are a quick immersion into teaching a particular topic. The courses focus on science content in the context of teaching strategies and inquiry. Online discussions build a community of learners. Courses also include readings, writings, and other assignments, and conclude with an assignment related to classroom practice.

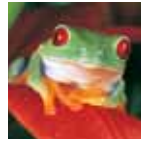
Prerequisites: These 2-session courses are modules derived from the Full Survey Courses, adapted to stand on their own, and extended with a special final assignment. If taking two or more of these courses in a particular subject, we recommend taking them in order, as each serves as a prerequisite for the next one in the series. However, if starting with one of the later courses, we suggest reading the syllabi of preceding courses to confirm existing knowledge.

Full Survey Courses

(45 contact hours)

These provide a comprehensive understanding of a subject and of the inquiry method, leading to a systemic change in approach to curriculum design and teaching strategies. Through online discussions that occur over several months, a collaborative community of learners develops. These full survey courses include readings, writings, and other assignments including a hands-on project that is worked on throughout the course. Full survey courses are the equivalent of 3 graduate level credits.

For more information visit www.TeachersDomain.org/courseinfo



Professional Development Course Catalog

Teachers' Domain is proud to offer the following professional development courses. More courses are in development, so please check with us often for new releases.

Courses are identified as 45 contact hours (a full survey course) or 15 contact hours (a 2-session course). The longer courses provide a comprehensive understanding of a subject and of the inquiry method, while the shorter courses provide a quick immersion into teaching a particular topic.

	Elementary K–4	contact hours	Middle 5–8	contact hours	High 9–12	contact hours
Life Science	Teaching Elementary Life Science	45	Teaching Middle School Life Science	45	Teaching High School Biology	45
	Science and the Living World	15	Structure and Function	15	Inquiry in Science Education	15
	Plants and Animals	15	Regulation and Behavior	15	Teaching About Genetics	15
	Heredity and Adaptation	15	Reproduction and Genetics	15	Teaching About Evolution	15
	Ecosystems and Human Impact	15	Natural Selection and Applied Genetics	15	Designing Effective Lessons	15
Physical Science	Teaching Elementary Physical Science	45	Teaching Middle School Physical Science	45	To see course descriptions, objectives, and syllabi, and to tour a course, please visit www.TeachersDomain.org/courseinfo	
	Motion and Forces in Your World	15	Understanding Energy Transfer	15		
	Understanding Motion and Force	15	Understanding Light and Waves	15		
	Understanding Properties and Structures	15	Understanding Heat Transfer	15		
			Understanding Solubility and Density	15		

"It made me think about what I'm teaching and why."
 Science Specialist,
 Chestnut Hill, MA

Elementary and middle school courses focus on three elements – content knowledge, inquiry methodology, and using technology in the classroom. High school courses assume a basic knowledge of the subject matter, and therefore emphasize inquiry methodology and the use of technology in lessons. Science topics within these high school courses are those that are often found to be challenging to teach and learn. These topics are used to facilitate the study of methodology.

Teachers' Domain Professional Development courses are available for educational organizations to license and deliver to their teachers. Teachers may want to contact their professional development specialist for course availability or www.TeachersDomain.org/courseinfo for more information.

Teachers' Domain is produced by WGBH, Boston's PBS station. Major funding for the science collection is from the National Science Digital Library as part of the National Science Foundation. Any opinions, findings, and conclusions or recommendations expressed in Teachers' Domain are those of the author(s) and do not necessarily reflect the views of the National Science Foundation.